



Tireless Innovation



KENDA



A unique driving experience!

In a world where performance, safety and superiority rule, Kenda is marking itself out from the crowd. By providing the automotive industry and millions of drivers worldwide with a product that defines superior engineering, Kenda tires offer a unique driving experience!



KENDA

Kenda has been at the forefront of noise reduction tire engineering for quite a while now and has successfully marketed its low noise tires around the world; a clear favorite amongst millions of commuters. The auto industry allows little or no room for mistakes and substandard quality levels so it is no surprise that we put safety, innovation and reliability at the core of our operation.

Behind every successful brand is a committed and passionate team that understands the promise that binds the business to the client. Kenda is no exception. Throughout the larger Kenda Group, to which Kenda Tires belongs, each and every individual works with the same purpose and driven passion to consistently fulfill that promise, and this since the group's foundation, half a century ago.

Today, Kenda is one of the world's leading tire and tube producers for automobiles, trucks, buses, trailers, motorcycles, scooters, bicycles, all terrain vehicles, golf carts, lawn care equipment, skid loaders and agricultural vehicles. With bases in Ohio USA, Yuan Lin Taiwan, Kunshan and Shenzhen China and Vietnam, Kenda provides quality products to suit a wide variety of applications and a level of service that is the envy of its competitors. Kenda not only follows market trends, it listens to suggestions from its customers and consumers very closely.

Committed its employees

Since Kenda seeks to provide the best for its clients and partners, it applies the same philosophy to its own people. Not only does Kenda strive to provide a healthy working environment for its employees, the company also offers a number of opportunities in continuing further education and training. Kenda is committed to the career development of its employees so that they may expand their own knowledge and skill sets. In turn, they provide the world with a product bearing the flagship Kenda trademark, a symbol of excellence for millions of drivers the world-over.

www.kenda.com.tw



UHP

- KR-26 p 02
- KR-20 p 04



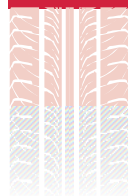
Passenger

- KR-23 p 06
- KR-17 p 08
- KR-15 p 10
- KR-11 p 12
- KR-10/09 p 14
- KR-08 p 16
- KR-02 p 18
- KR-01 p 20



Winter

- KR-19 p 22



min

min



silence

SUV/ Light Truck

- KR-22 p 24
- KR-12 p 26
- KR-06 p 28
- KR-05 p 30



Trailer

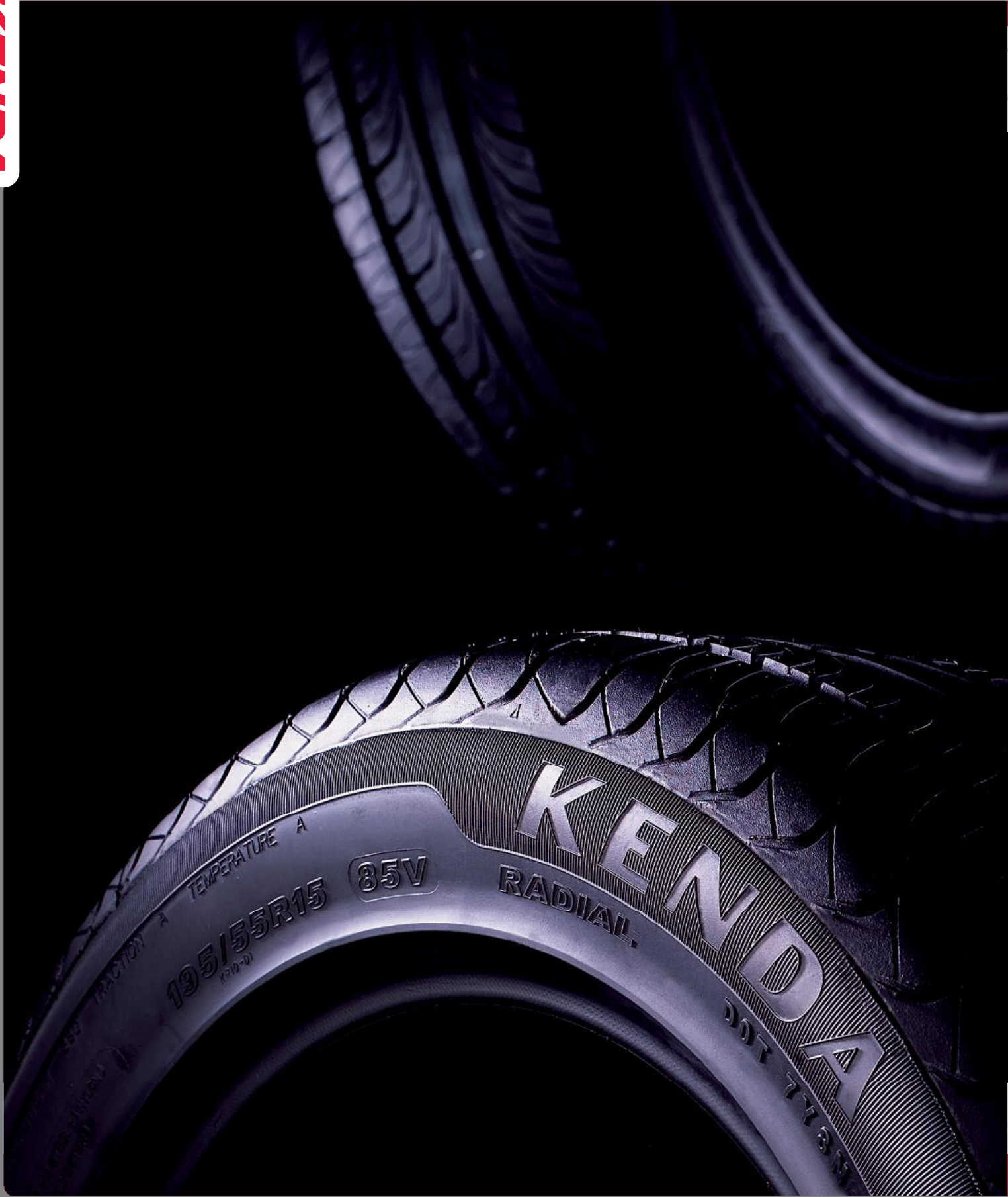
- KR-18 p 32
- KR-16 p 34
- KR-03 p 36



Bias Light Truck/ Truck Bus

- K-All p 38

KENDAMA



TRACTION A

TEMPERATURE A

195/55R15
(R0-D)

85V

RADIAL

KENDAMA

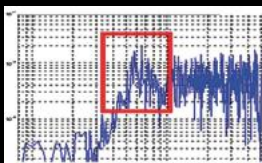
DOT 7713



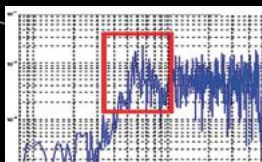
About NMA:

Noise Minimization Algorithm (NMA) is a computer simulation technology that utilizes genetic algorithms and numerical analysis to discover the optimal tread pattern for noise minimization. Evolutionary computation simulates Nature's rule of survival of the fittest, as bad genes are eliminated in a process of constantly adapting to the environment.

In this random search method, the computation models the behavior of the chromosomes when a parent generates offspring, such as selection, reproduction crossover and mutation. A performance index also known as the fitness level, is then calculated using the fitness function, where an individual with a higher fitness level has a greater chance of survival in the environment and can usually generate offspring who also have higher fitness levels.



Example of Improvement after NMA



Kaiser
AST-1

Kaiser
AST-1
KR-26
ULTRA HIGH
PERFORMANCE



Four outside ribs with consistent stiffness provide perfect handling around corners.



High void ratio design in the inside shoulder allows effective water evacuation and a great ride in wet conditions.



Special tread design five-pitch sequences for a smooth and quiet ride.

- Tread design with five-pitch sequences offers a quiet, comfortable ride.
- Four outside ribs with consistent stiffness provide handling and cornering stability.
- Inside shoulder with high void ratio design evacuates water for excellent wet performance.

KENDA



Ultra High Performance

ultra silence



KR-26

SERIES	SIZE			S.W. (MM)	O.D. (MM)	MAX. LOAD (LBS)	MAX. LOAD (KGS)	MAX. PSI	RIM (INCH)	TREAD DEPTH (MM)
40 SERIES	225/40ZR18	92Y	XL	230	637	630	1389	44	8.5	8.0
45 SERIES	215/45ZR17	91W	XL	213	626	615	1356	44	7.0	8.0
	225/45ZR17	94W	XL	225	634	670	1477	44	7.5	8.0
	235/45ZR17	97W	XL	236	644	730	1609	44	8.0	8.0
50 SERIES	195/50R15	82V		201	577	475	1047	44	6.0	8.0
55 SERIES	195/55R15	89V	XL	201	595	580	1279	44	6.0	8.0
	205/55ZR16	94W	XL	214	632	670	1477	44	6.5	8.0
60 SERIES	195/60R15	88V		201	615	560	1235	44	6.0	8.0
	205/60R15	91V		209	627	615	1356	44	6.0	8.0
	205/60R15	91W		209	627	615	1356	44	6.0	8.0
65 SERIES	195/65R15	91V		201	635	615	1356	44	6.0	8.0



KR-26

KAISER

KAISER

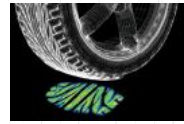
KR-20
ULTRA HIGH
PERFORMANCE



Special shoulder design reduces noise for a quiet ride.



3D double grooves design evacuates water for excellent wet performance.



Contact Pressure
Better uniform footprint pressure distribution delivers steering stability and long even wear.



Rim protector bar protects wheels against scuffing damage.

- Advanced compound offers stability and grip performance.
- High-density endless nylon cap plies increase high-speed carcass integrity and enhances uniformity.
- Additional rim protector for extra layer of defense.
- Extensive range in V/W performance categories.
- Demonstrates excellent acceleration and braking performance.

KENDA



Ultra High Performance

 ultra silence



KR-20

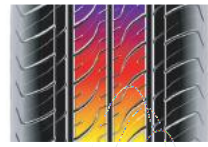
SERIES	SIZE			S.W. (MM)	O.D. (MM)	MAX. LOAD (LBS)	MAX. LOAD (KGS)	MAX. PSI	RIM (INCH)	TREAD DEPTH (MM)
30 SERIES	265/30ZR19	93W	XL	271	643	1433	650	51	9.5	8.3
35 SERIES	215/35ZR18	84W		218	607	1102	500	51	7.5	
	265/35ZR18	97W		271	643	1609	730	51	9.5	8.3
	225/35ZR19	88W	XL	230	641	1235	560	51	8.0	8.1
	235/35ZR19	91W	XL	241	647	1356	615	51	8.5	8.3
	245/35ZR19	93W	XL	248	655	1433	650	51	8.5	8.3
	245/35ZR20	95W		245	680	1521	690	51	8.5	8.3
	255/35ZR20	97W		260	686	1609	730	51	9.0	8.3
40 SERIES	205/40ZR17	84W	XL	215	596	1102	500	51	7.5	8.3
	205/40R17	84H	XL	215	596	1102	500	51	7.5	8.3
	215/40ZR17	83W		218	604	1074	487	44	7.5	8.1
	245/40ZR17	91W		248	628	1356	615	44	8.5	8.3
	225/40ZR18	88W	XL	230	637	1235	560	44	8.0	8.1
	225/40ZR18	92W	XL	230	637	1389	630	51	8.0	8.1
	225/40 R 18	92W	XL	230	637	1389	630	51	8.0	8.1
	235/40ZR18	91W		241	645	1356	615	44	8.5	8.3
	235/40ZR18	95W	XL	241	645	1521	690	51	8.5	8.3
	245/40ZR18	93W		248	653	1433	650	44	8.5	8.3
	245/40ZR18	97W	XL	248	653	1609	730	51	8.5	8.3
45 SERIES	205/45ZR16	83W		206	590	1074	487	44	7.0	
	205/45ZR16	87W		206	590	1201	545	51	7.0	
	215/45ZR17	87W		212	626	1201	545	44	7.0	8.1
	215/45ZR17	91W	XL	212	626	1356	615	51	7.0	8.1
	215/45R17	91H	XL	212	626	1356	615	51	7.0	8.1
	225/45ZR17	91W		225	634	1356	615	44	7.5	
	225/45ZR17	94W	XL	225	634	1477	670	51	7.5	8.1
	225/45R17	94H	XL	225	634	1477	670	51	7.5	8.1
	235/45ZR17	94W		238	644	1477	670	44	8.0	8.3
	235/45 R 17	94W		238	644	1477	670	44	8.0	8.3
	245/45ZR17	95W		245	652	1521	690	44	8.0	8.3
	225/45ZR18	91W		225	659	1356	615	44	7.5	8.1
	245/45ZR18	96W		245	677	1565	710	44	8.0	8.3
50 SERIES	195/50R15	82V		198	578	1047	475	44	6.0	8.1
	215/50R17	91V		226	648	1356	615	44	7.0	8.1
55 SERIES	185/55R15	82H		194	585	1047	475	44	6.0	8.1
	195/55R15	85V		198	596	1135	515	44	6.0	8.1
	205/55R16	91V		214	632	1356	615	44	6.5	8.1
	205/55R16	94W	XL	214	632	1477	670	51	6.5	8.1
	215/55ZR16	97W	XL	226	642	1609	730	51	7.0	8.1
	225/55ZR16	95W		233	654	1521	690	44	7.0	8.3
60 SERIES	185/60R13	80H		189	552	992	450	44	5.5	8.3



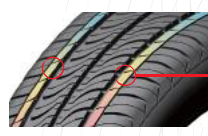
KR-20

KOMET PLUS

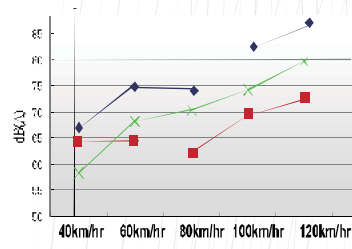
KOMET PLUS KR-23 PASSENGER



Using "non-equidistant pattern arrangement" and powerful computations to provide the product with optimal audio frequency and reduces sympathetic chord produced by pattern.



NMA Technology : Reduces noise



- 1 SNOW (Spiral Nylon Over-Wrap) Gives excellent stability at higher speed.
- 2 High strength steel cord: Enhances tread stiffness.

- All-season tread compound = Superb winter performance without compromising long mileage.
- Reliable traction in all weather conditions with maximized wet handling.
- Reduces noise for a quiet ride.
- Uniformity and a smooth comfortable ride.

KENDA

Passenger Car



 ultra silence



KR-23

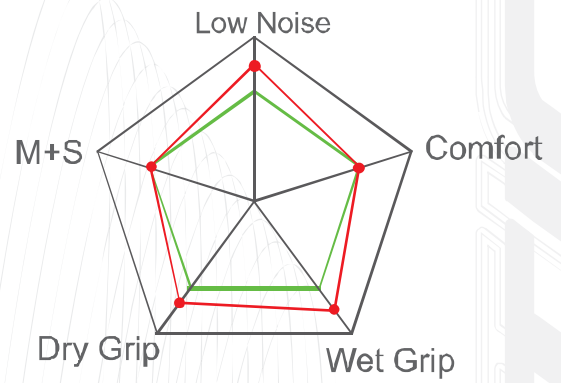
SERIES	SIZE		S.W. (MM)	O.D. (MM)	MAX. LOAD (LBS\KGS)	MAX. PSI	RIM (INCH)	TREAD DEPTH (MM)
55 SERIES	185/55R14	80H	194	560	992/450	44	6.0	8.0
60 SERIES	185/60R14	82H	189	578	1047/475	44	5.5	8.3
	195/60R14	86H	201	590	1168/530	44	6.0	8.3
	185/60R15	84H	189	603	1102/500	44	5.5	8.3
	195/60R15	88H	201	615	1235/560	44	6.0	8.3
	205/60R15	91H	209	627	1356/615	44	6.0	8.3
	225/60R15	96H	228	651	1565/710	44	6.5	8.7
	215/60R16	95H	221	664	1521/690	44	6.5	8.4
65 SERIES	225/60R16	98H	228	676	1653/750	44	6.5	8.7
	165/65R13	77H	170	544	908/412	44	5.0	7.2
	165/65R14	79H	170	570	963/437	44	5.0	7.2
	175/65R14	82H	177	584	1047/475	44	5.0	7.5
	185/65R14	86H	189	596	1168/530	44	5.5	8.2
	195/65R14	89H	201	610	1279/580	44	6.0	8.3
	195/65R15	91H	201	635	1356/615	44	6.0	8.3
	205/65R15	94H	209	647	1477/670	44	6.0	8.2
	205/65R16	95H	209	676	1433/650	44	6.0	8.4
	215/65R16	98V	221	686	1653/750	44	6.5	8.4
70 SERIES	155/70R13	75T	157	548	853/387	44	4.5	7.2
	165/70R13	79T	170	562	963/437	44	5.0	7.2
	175/70R13	82H	177	576	1047/475	44	5.0	7.5
	185/70R13	86H	189	590	1168/530	44	5.5	8.2
	185/70R14	88H	189	616	1235/560	44	5.5	8.2
	195/70R14	91H	201	630	1356/615	44	6.0	8.2
	205/70R14	95H	209	644	1521/690	44	6.0	8.5
80 SERIES	155/80R13	79T	157	578	963/437	44	4.5	7.2
	165/80R13	83T	165	594	1074/487	44	4.5	7.2
	185/80R14	91T	184	652	1356/615	44	5.0	8.2



KR-23

KENETICA

KENETICA
KR-17
PASSENGER



- **Random variable pitch tread arrangement significantly reduces noise.**
- **High modulus low shrinkage carcass enhances driving comfort.**
- **Excellent grip.**

KENDA

Passenger Car



 ultra silence

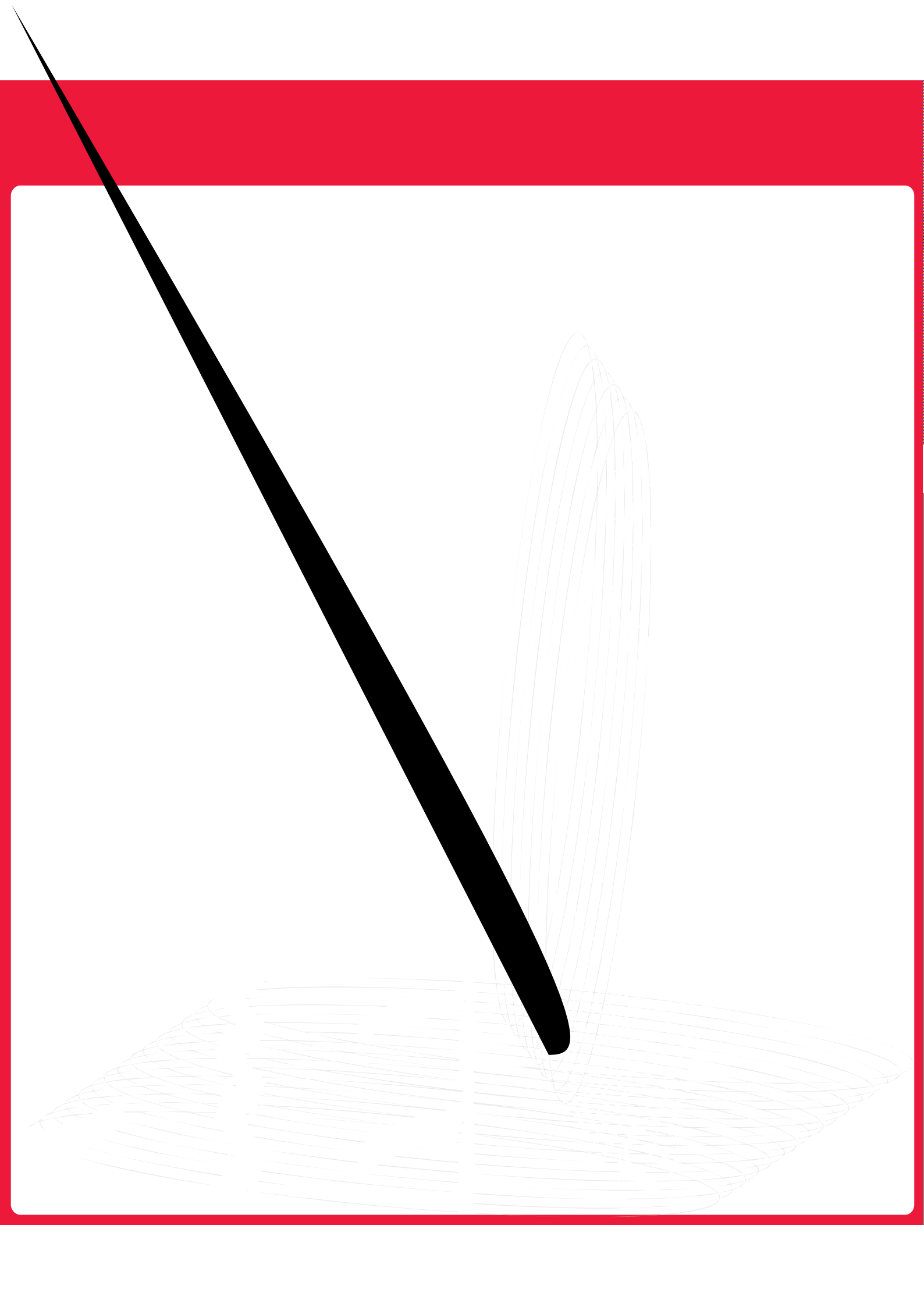


KR-17

SERIES	SIZE		S.W. (MM)	O.D. (MM)	MAX. LOAD (LBS\KGS)	MAX. PSI	RIM (INCH)	TREAD DEPTH (MM)
60 SERIES	185/60R14	82H	181	582	1047/475	44	5.5	8.2
	195/60R14	86H	192	594	1168/530	44	6.0	8.2
	195/60R15	88H	192	619	1235/560	44	6.0	8.2
	205/60R15	91H	201	632	1356/615	44	6.0	8.2
	215/60R15	94H	209	644	1477/670	44	6.5	8.2
65 SERIES	175/65R14	82T	182	589	1047/475	44	5.0	8.2
	185/65R14	86H	187	595	1168/530	44	5.5	8.2
	185/65R14	86T	187	595	1168/530	44	5.5	8.2
	195/65R15	91H	197	636	1356/615	44	6.0	8.2
	195/65R15	91T	197	636	1356/615	44	6.0	8.2
	205/65R15	94H	205	648	1477/670	44	6.0	8.2
	205/65R15	94T	205	648	1477/670	44	6.0	8.2
	205/65R15	94S	205	648	1477/670	44	6.0	8.2
70 SERIES	165/70R13	79T	170	562	963/437	44	5.0	8.2
	175/70R13	82T	178	580	1047/475	44	5.0	8.2
	185/70R13	86T	193	596	1168/530	44	5.5	8.2
	185/70R14	88T	190	620	1235/560	44	5.5	8.2
	195/70R14	91T	200	634	1356/615	44	6.0	8.2
	205/70R14	95T	208	645	1521/690	44	6.0	8.2
	205/70R15	96S	208	667	1565/710	44	6.0	8.2
	215/70R15	98S	214	680	1653/750	44	6.5	8.2
75 SERIES	235/75R15	105S	235	730	2039/925	44	6.5	8.2
80 SERIES	145/80R12	74T	145	537	827/375	44	4.0	8.2
	155/80R12	77T	157	553	908/412	44	4.5	8.2
	155/80R13	79T	157	578	963/437	44	4.5	8.2
	165/80R15	87T	165	645	1201/545	44	4.5	8.2



KR-17



KENDA

Passenger Car/SUV

 ultra silence



KR-15

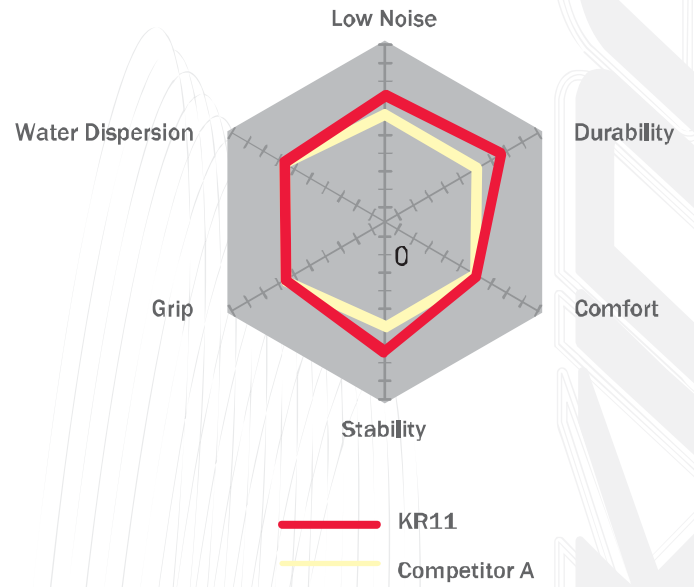
SERIES	SIZE		S.W. (MM)	O.D. (MM)	MAX. LOAD (LBS/KGS)	MAX. PSI	RIM (INCH)	TREAD DEPTH (MM)
60 SERIES	P235/60R14	96H	240	638	1565/710	44	7.0	9.0
	P235/60R15	98H	236	663	1653/750	44	7.0	9.0
	P245/60R15	100H	248	675	1764/800	44	7.0	9.0
65 SERIES	P235/60R16	100H	236	688	1764/800	44	7.0	9.0
	P215/65R15	96H	221	663	1565/710	44	6.5	8.7
70 SERIES	P215/65R16	98H	221	686	1653/750	44	6.5	8.7
	P205/70R15	95H	207	670	1521/690	44	6.0	8.7
	P215/70R15	98H	218	684	1653/750	44	6.5	8.7
	P225/70R15	100H	228	698	1764/800	44	6.5	9.0
	P235/70R15	103H	240	711	1929/875	44	7.0	9.0
	P265/70R15	110H	266	753	2337/1060	44	8.0	9.4
	P215/70R16	100H	222	708	1764/800	44	6.5	8.7
	P225/70R16	102H	232	722	1874/850	44	6.5	9.0
	P235/70R16	106H	240	736	2094/950	44	7.0	9.0
	P245/70R16	107H	248	750	2149/975	44	7.0	9.0
	P255/70R16	107H	260	764	2271/1030	44	7.5	9.0
75 SERIES	P265/70R16	112H	268	780	2469/1120	44	8.0	9.4
	P215/75R15	100H	230	720	1764/800	44	6.0	9.2
	P235/75R15	105H	236	734	2039/925	44	6.5	9.7



KR-15

CAB KING

CAB KING
KR-11
PASSENGER



- New formulated computer aided design provides low noise and stability performance.
- Wide shoulders with center grooves add superior handling and water dispersion.
- A special tread compound for long-lasting tread wear and excellent traction.

KENDA



Passenger Car

ultra silence



KR-11

SERIES	SIZE		S.W. (MM)	O.D. (MM)	MAX. LOAD (KGS\LBS)	MAX. PSI	RIM (INCH)	TREAD DEPTH (MM)
60 SERIES	185/60R14	82H	189	578	1047/475	36/250	5.5	8.3
	195/60R14	86H	198	589	1168/530	36/250	6.0	8.3
70 SERIES	145/70R12	69T	148	509	716/325	36/250	4.5	8.1
	165/70R13	79T	172	566	963/437	36/250	5.0	8.2
	175/70R13	82T	178	576	1047/475	36/250	5.0	8.3
	185/70R13	86T	186	590	1168/530	36/250	5.5	8.4
	165/70R14	81T	167	591	1019/462	36/250	5.0	8.2

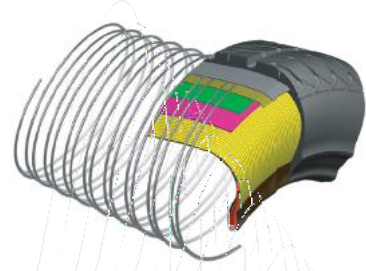
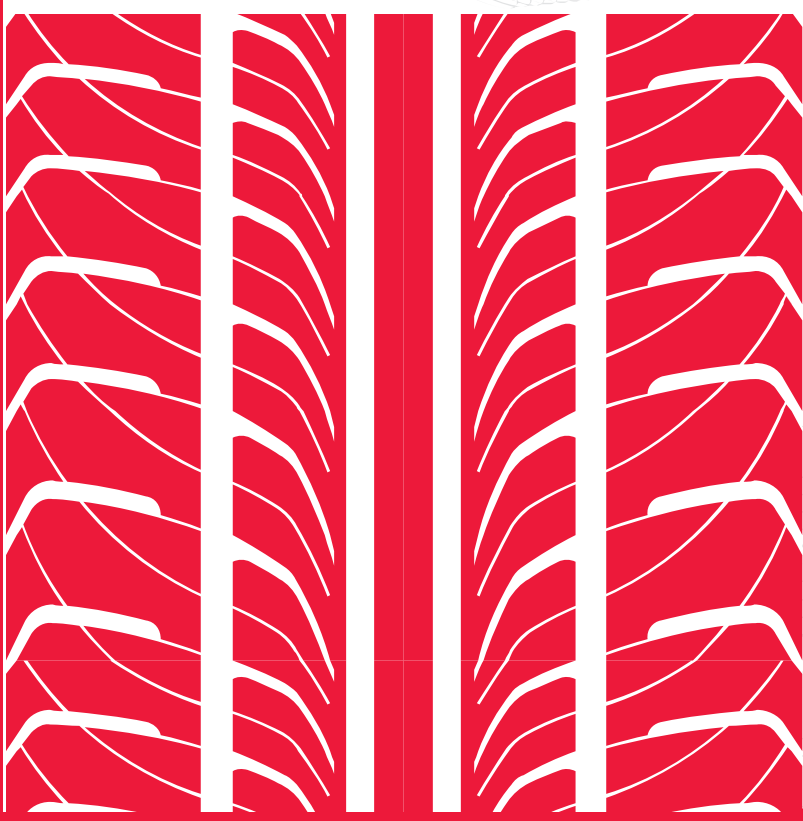


KR-11

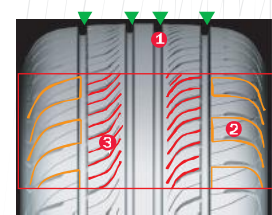
KOMET
spt-1/2



KOMET
spt-1/2
KR-10 / KR-09
PASSENGER



SNOW (Spiral Nylon Over-Wrap) for better uniformity and cornering control



- ❶ Optimal circumferential/transverse channel ratio for noise reduction and improved abrasion resistance.
- ❷ Bar tread pattern for improved cornering control.
- ❸ Angled transverse channels for improved water dispersal and skid resistance in wet conditions.

- Spiral jointless nylon cap-ply enhances tire uniformity and durability.
- Rim protector to protect rims from accidental curb damage.
- Optimal pattern provides extreme low noise and comfort driving.
- Center-rib tread design enhances high-speed handling stability.
- Uni-Directional tire (KR09).

KENDA

Passenger Car



KR-10 / KR-09

SERIES	SIZE		S.W. (MM)	O.D. (MM)	MAX. LOAD (LBS \ KGS)	MAX. PSI	RIM (INCH)	TREAD DEPTH (MM)
KR10								
45 SERIES	235/45R17	95V	236	644	1521/690	44	8.0	8.1
50 SERIES	205/50R16	87V	214	612	1201/545	44	6.5	8.2
	225/50R16	92V	233	632	1389/630	44	7.0	8.2
55 SERIES	195/55R15	85W	198	596	1135/515	44	6.0	8.1
	195/55R15	85V	198	596	1135/515	44	6.0	8.1
	205/55R15	88V	214	607	1235/560	44	6.5	8.1
	205/55R16	91V	214	632	1356/615	44	6.5	8.1
	215/55R16	93V	226	642	1433/650	44	7.0	8.1
	225/55R16	95V	233	654	1521/690	44	7.0	8.1
	215/55R17	98V	234	668	1653/750	44	7.0	8.1
	225/55R17	98V	233	680	1653/750	44	7.0	8.1
60 SERIES	185/60R14	82H	189	578	1047/475	44	5.5	8.3
	195/60R14	86H	206	590	1681/530	44	6.0	8.3
	185/60R15	84H	189	603	1102/500	44	5.5	8.3
	195/60R15	88V	206	615	1235/560	44	6.0	8.4
	205/60R15	91V	209	627	1356/615	44	6.0	8.3
	205/60R16	92V	209	652	1356/615	44	6.0	8.3
	225/60R16	98V	228	676	1653/750	44	6.5	8.3
65 SERIES	185/65R14	86H	189	596	1168/530	44	5.5	8.3
	195/65R14	89H	205	610	1279/580	44	6.0	8.4
	195/65R15	91V	201	635	1356/615	44	6.0	8.4
	205/65R15	94V	209	647	1477/670	44	6.0	8.4
KR09								
50 SERIES	195/50R15	82V	201	577	1047/475	44	6.0	8.1
	205/50R15	86V	212	587	1168/530	44	6.5	8.2
55 SERIES	195/55R15	85V	201	595	1135/515	44	6.0	8.3



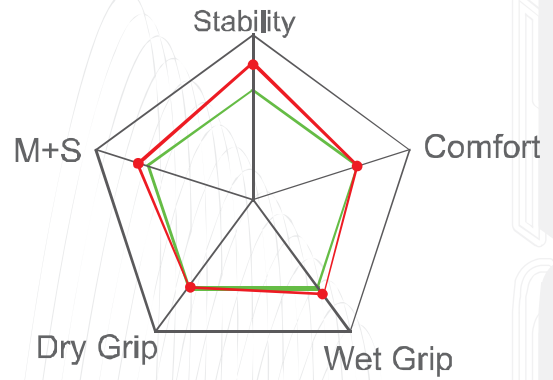
KR09

KR-10 / KR-09

KLIMATE

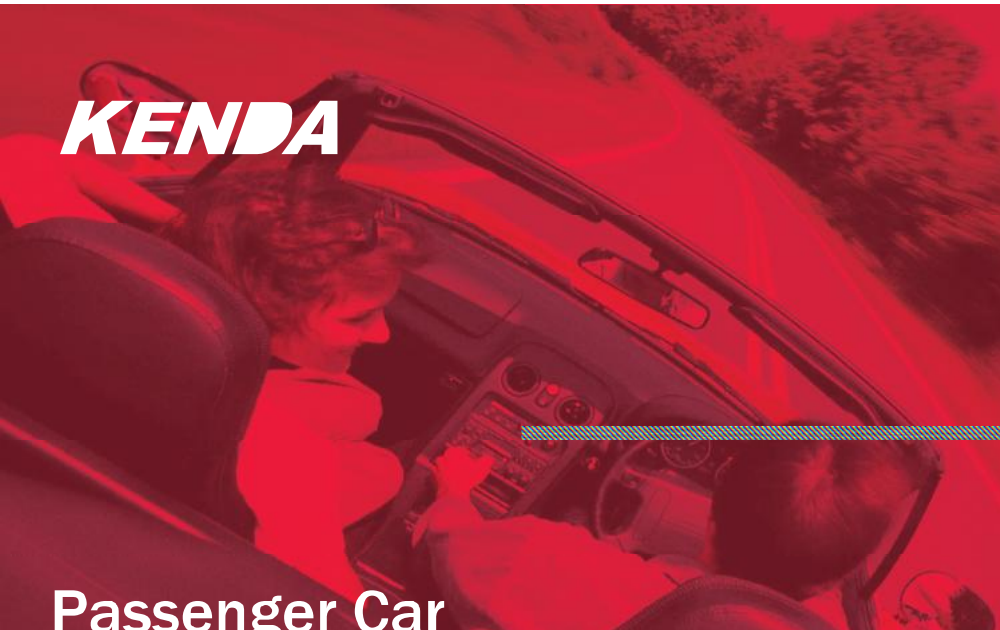


KLIMATE
KR-08
PASSENGER



- All-season performance tread design balances dry and wet traction, provides excellent all-weather grip.
- A special designed tread block provides safe handling in snowy condition.
- Variable pitch tread pattern arrangement offers quieter and a more comfortable ride.

KENDA



Passenger Car

ultra silence



KR-08

SERIES	SIZE		S.W. (MM)	O.D. (MM)	MAX. LOAD (LBS\KGS)	MAX. PSI	RIM (INCH)	TREAD DEPTH (MM)
60 SERIES	P205/60R15	90H	210	626	1323/600	44	6.0	8.3
	P225/60R16	97H	230	676	1620/735	44	6.5	8.7
65 SERIES	P185/65R14	85H	190	596	1135/515	44	5.5	8.2
	P205/65R15	92H	208	650	1400/635	44	6.0	8.4
70 SERIES	P205/70R15	95H	210	670	1532/695	44	6.0	8.7
	P215/70R15	97T	220	686	1620/735	44	6.5	8.7
75 SERIES	P195/75R14	92S (OWL)	198	650	1400/635	44	5.5	8.7
	P205/75R14	95S (OWL)	206	666	1532/695	44	5.5	9.5
	P235/75R15	105S (OWL)	238	734	2061/935	44	6.5	9.7
	P235/75R15	108S (OWL)	238	734	2205/1000	51	6.5	9.7

PS: OWL MEANS OUTLINED WHITE LETTER



KR-08

KOMET

KOMET
KR-02
PASSENGER



- 1 Shoulder: A wavy tread pattern provides traction for corners.
- 2 Grooves: The wide groove design offers better water dispersal and traction in wet conditions.

- Random variable pitch tread arrangement significantly reduces noise.
- High modulus low shrinkage carcass enhances driving comfort.
- Wide grooves provide effective water dispersion and better wet traction.
- Shoulder design with curb blocks offers excellent cornering and handling characteristics.

KENDA

Passenger Car



 ultra silence



KR-02

SERIES	SIZE		S.W. (MM)	O.D. (MM)	MAX. LOAD (LBS)	MAX. LOAD (KGS)	MAX. PSI	RIM (INCH)	TREAD DEPTH (MM)
60 SERIES	185/60R14	82H	189	578	1047	475	36	5.5	8.3
	195/60R14	86H	200	590	1168	530	36	6.0	8.3
	195/60R15	88H	200	615	1235	560	36	6.0	8.3
	195/60R15	88V	200	615	1235	560	36	6.0	8.3
	205/60R15	91V	209	626	1356	615	36	6.0	8.3
	205/60R15	91H	209	626	1356	615	36	6.0	8.3
	215/60R15	94V	220	638	1477	670	36	6.5	8.5
	215/60R15	94H	220	638	1477	670	36	6.5	8.5
	225/60R15	96V	228	650	1565	710	36	6.5	8.7
	225/60R15	96H	228	650	1565	710	36	6.5	8.7
	215/60R16	95H	220	664	1521	690	36	6.5	8.5
	225/60R16	98V	228	676	1653	750	36	6.5	8.7
	225/60R16	98H	228	676	1653	750	36	6.5	8.7
	65 SERIES	165/65R13	77T	170	544	908	412	36	5.0
165/65R13		77H	170	544	908	412	36	5.0	7.9
175/65R14		82T	180	584	1047	475	36	5.0	8.0
175/65R14		82H	180	584	1047	475	36	5.0	8.0
185/65R14		86H	190	596	1168	530	36	5.5	8.5
195/65R14		89H	200	610	1279	580	36	6.0	8.4
205/65R14		91H	208	625	1356	615	36	6.0	8.4
185/65R15		88H	186	622	1168	530	36	5.5	8.2
195/65R15		91H	200	636	1356	615	36	6.0	8.4
195/65R15		91V	200	636	1356	615	36	6.0	8.4
205/65R15		94H	208	650	1477	670	36	6.0	8.4
205/65R15		94V	208	650	1477	670	36	6.0	8.4
215/65R15		96H	220	663	1565	710	36	6.5	8.4

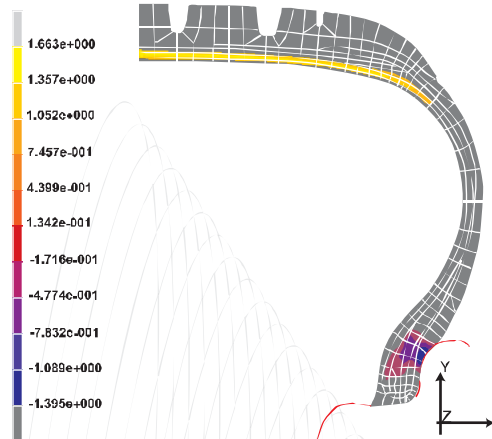


KR-02

KRUISEP

KRUISEP
KR-01
PASSENGER

Finite Element Method (FEM)



Using the Finite Element Method (FEM) and powerful numerical computations to conduct structural or product analysis focusing on the tire's shape change under stress and vibration in order to improve the product with optimal designs.

- Open sipe tread pattern for ultimate wet traction and ride comfort.
- High performance structural design improves high speed safety and handling.
- Optimal compound design offers long mileage.

KENDA



Passenger Car

ultra silence



KR-01

SERIES	SIZE		S.W. (MM)	O.D. (MM)	MAX. LOAD (LBS)	MAX. LOAD (KGS)	MAX. PSI	RIM (INCH)	TREAD DEPTH (MM)
70 SERIES	155/70R13	75T	160	552	853	387	36	4.5	8.2
	165/70R13	79T	172	566	963	437	36	5.0	8.2
	175/70R13	82H	178	581	1047	475	36	5.0	8.3
	185/70R13	86H	188	596	1168	530	36	5.5	8.4
	165/70R14	81T	172	591	1019	462	36	5.0	8.2
	165/70R14	81H	172	591	1019	462	36	5.0	8.2
	175/70R14	84H	177	602	1102	500	36	5.0	8.6
	185/70R14	88H	188	622	1235	560	36	5.5	8.4
	195/70R14	91H	198	636	1356	615	36	6.0	8.6
	205/70R14	95H	208	651	1521	690	36	6.0	8.7
	205/70R15	95H	210	676	1521	690	36	6.0	8.7
	215/70R15	98H	221	686	1653	750	36	6.5	8.7
80 SERIES	155/80R13	79T	158	578	959	437	35	4.5	8.2
	165/80R13	83T	170	594	1069	485	35	4.5	8.2
	185/80R14	91T	188	652	1356	615	36	5.0	8.3

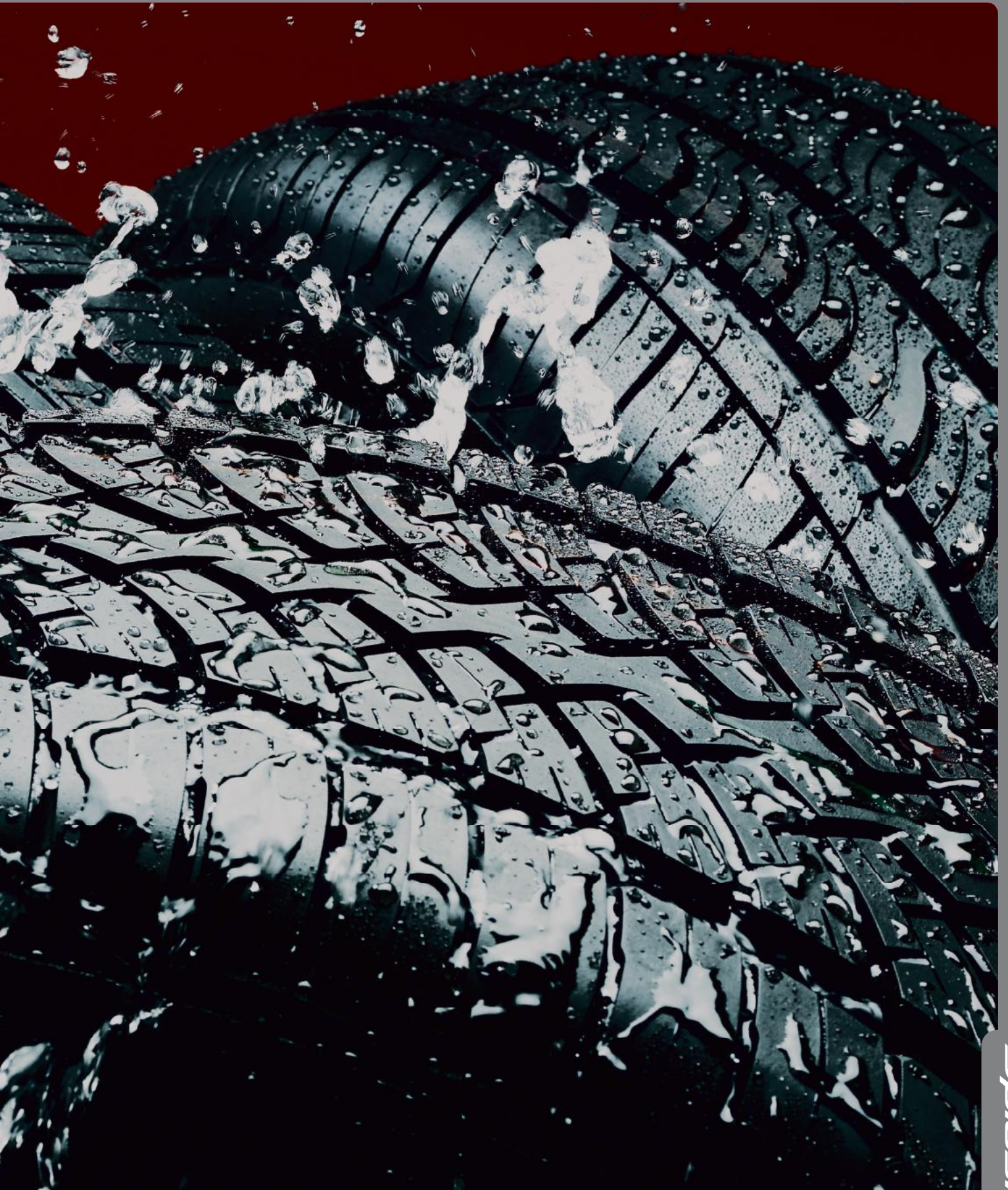


KR-01

KENDRA



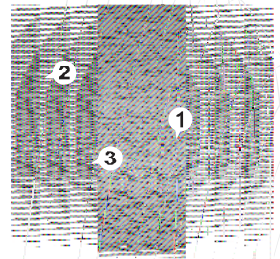
When bad weather becomes fun!



Splash



POLAR TRAX
KR-19
WINTER



1. Zigzag sipes and grooves provide excellent snow/ ice/ wet control and handling.
2. Shoulder design enhances snow traction and grip.
3. V-shape grooves increase water dispersion and driving stability.

- Twin structure provides superior high speed performance.
- The drainage grooves increase water clearance efficiency.
- Special silica compound enhances handling.
- Zig-zag sipes provide better traction and outstanding grip on snowy and icy road.



KENDA

Winter



 ultra silence

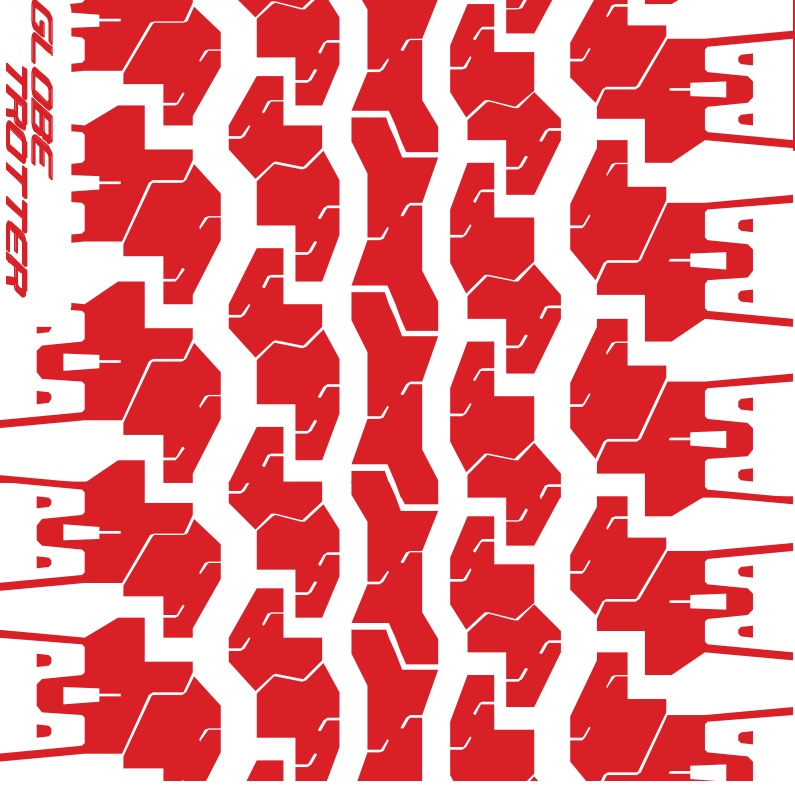


KR-19

SERIES	SIZE	S.W. (MM)	O.D. (MM)	MAX. LOAD S/D (LBS)	MAX. LOAD S/D (KGS)	MAX. PSI	RIM (INCH)	TREAD DEPTH (MM)
50 SERIES	195/50R15 82H	201	577	1047	475	44	6.0	8.3
55 SERIES	195/55R15 85H	201	595	1135	515	44	6.0	8.3
	205/55R15 88H	214	607	1235	560	44	6.5	8.3
	205/55R16 91H	214	632	1356	615	44	6.5	8.3
	225/55R16 95V	233	654	1521	690	44	7.0	8.3
60 SERIES	185/60R14 82T	189	578	1047	475	44	5.5	8.3
	195/60R14 86T	201	590	1168	530	44	6.0	8.3
	185/60R15 88T	189	603	1235	560	44	5.5	8.3
	195/60R15 88T	201	615	1235	560	44	6.0	8.3
	205/60R15 91T	209	627	1356	615	44	6.0	8.3
65 SERIES	215/60R16 95H	221	664	1521	690	44	6.5	8.3
	175/65R14 82T	177	584	1047	475	44	5.0	8.3
	185/65R14 86T	189	596	1168	530	44	5.5	8.3
	185/65R15 88T	189	621	1235	560	44	5.5	8.3
	195/65R15 91T	200	636	1356	615	44	6.0	8.3
70 SERIES	205/65R15 94T	209	647	670	1477	44	6.0	8.3
	215/65R16 98H	221	686	1653	750	44	6.5	8.3
	185/70R14 88T	189	616	1235	560	44	5.5	8.3

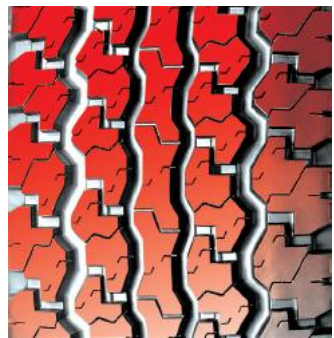
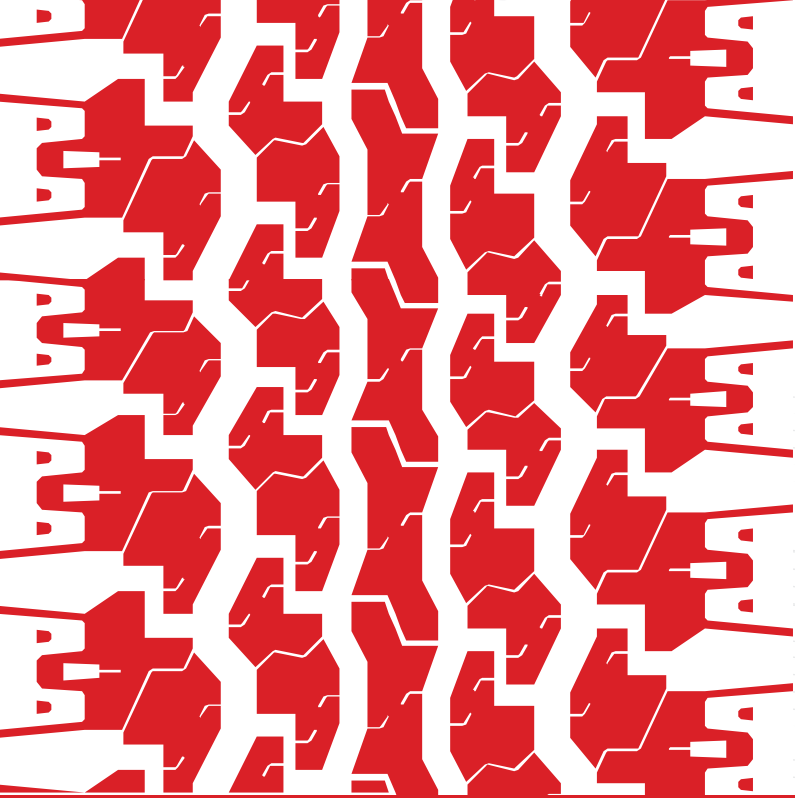


KR-19



**GLOBE
TROTTER**

**GLOBE
TROTTER**
KR-22
SUV



Its aggressive tread pattern gives high speed stability and durability .

- Straight pattern arrangement maintains stability in straight-line driving.
- Square shoulder design with wide grooves enhances road contact performance and traction.



KENDA

SUV



(ultra silence



KR-22

SERIES	SIZE	S.W. (MM)	O.D. (MM)	MAX. LOAD S/D (LBS)	MAX. LOAD S/D (KGS)	MAX. PSI	RIM (INCH)	TREAD DEPTH (MM)
70 SERIES	275/70R16 114T	275	788	2601	1180	51	8.0	9.7

- Wear
- Braking
- All Terrain
- Stability
- Jointless
- Wet Grip
- Dry Grip
- M+S

KR-22
24



KENDA

Light Truck



KR-12

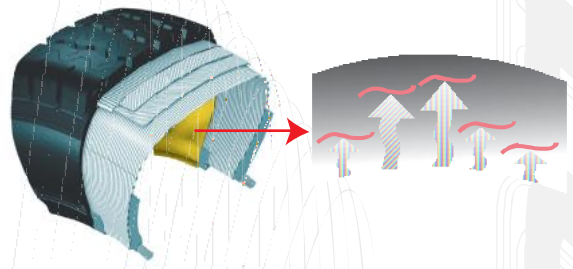
SERIES	SIZE		PLY RATING	S.W. (MM)	O.D. (MM)	MAX. LOAD S/D (LBS)	MAX. LOAD S/D (KGS)	MAX. PSI	RIM (INCH)	TREAD DEPTH (MM)
	7.00R15 10P	111/109L	10PR	190	747	2403/2271	1090/ 1030	87	5.5	11.2
	7.00R15 12P	114/112L	12PR	190	751	2601/2469	1180/ 1120	100	5.5	11.2
	6.50R16 10P	108/107N	10PR	180	748	2205/2149	1000/ 975	83	5.5	10.7
	6.50R16 12P	111/109N	12PR	180	748	2403/2271	1090/ 1030	97	5.5	10.7
	7.00R16 10P	113/111N	10PR	190	772	2535/2403	1150/ 1090	87	5.5	11.2
	7.00R16 12P	117/116N	12PR	190	776	2833/2756	1285/1250	100	5.5	11.2



KR-12

KOYOTE

KOYOTE
KR-06
LIGHT TRUCK



High air retention inner-liner ensures lasting pressure.

- Reinforced steel belted construction for heavy duty application.
- High performance inner-liner for durability.
- Superior tread compound for long wear life.

KENDA



Light Truck

ultra silence



KR-06

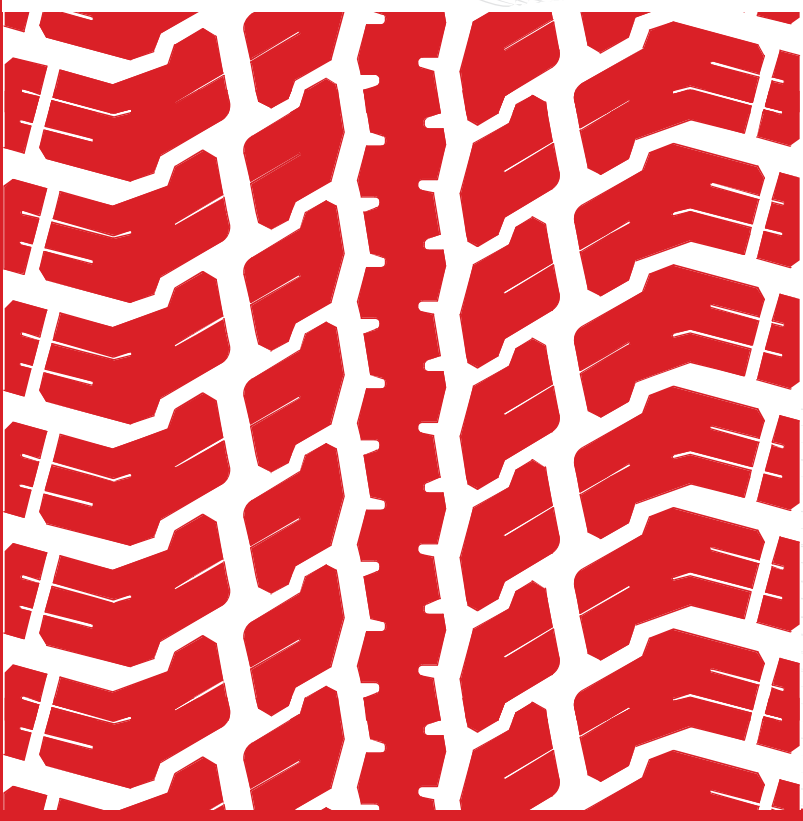
SERIES	SIZE	LOAD RANG	S.W. (MM)	O.D. (MM)	MAX. LOAD S/D (LBS)	MAX. LOAD S/D (KGS)	MAX. PSI	RIM (INCH)	TREAD DEPTH (MM)
	145R12C 81/79N	C	144	540	1019/963	462/437	51	4.0	8.1
	145R12C 86/84N	D	144	540	1168/1102	530/500	65	4.0	8.1
	145R12C 95/93L	E	144	540	1520/1237	690/650	80	4.0	8.1
	155R12C 83/81N	C	156	552	1074/1019	487/462	51	4.5	8.4
	155R12C 88/86N	D	156	552	1235/1168	560/530	65	4.5	8.4
	155R13C 91/89N	D	156	578	1356/1279	615/580	65	4.5	8.4
	165R13C 94/92N	D	166	596	1477/1389	670/630	65	4.5	8.4
	185R14C 99/97N	C	188	650	1709/1609	775/730	55	5.5	9.3
	185R14C 102/100N	D	188	650	1874/1764	850/800	65	5.5	9.3
	195R14C 102/100N	C	196	668	1874/1764	850/800	55	5.5	9.3
	195R14C 106/104N	D	196	668	2094/1984	950/900	65	5.5	9.3
	205R14C 109/107H	D	208	686	2270/2149	1030/975	65	6.0	9.3
	215R14C 112/110Q	D	218	700	2469/2337	1120/1060	65	6.0	9.3
	195R15C 106/104R	D	196	693	2094/1984	950/900	65	5.5	9.3
70 SERIES	195/70R15C 100/98R	C	202	656	1764/1653	800/750	55	6.0	9.3
	195/70R15C 104/102R	D	198	656	1984/1874	900/850	65	6.0	9.3
	215/70R15C 109/107R	D	221	683	2270/2150	1030/975	65	6.5	9.3
	225/70R15C 112/110R	D	226	697	2469/2337	1120/1060	65	6.5	9.9
75 SERIES	195/75R14C 102/100Q	C	196	648	1874/1674	850/800	55	5.5	9.3
	215/75R14C 112/110R	D	215	678	2469/2337	1120/1060	69	6.0	9.5
	195/75R16C 110/108N	E	196	698	2336/2205	1060/1000	80	5.5	9.3
	205/75R16C 113/111N	E	203	714	2535/2403	1150/1090	77	6.0	9.3

KR-06





KLEVER
KR-05 A/P
SUV / LIGHT TRUCK



All-terrain tread design



White outline font improved style

- 1 One-ply nylon strap.
- 2 Two steel belt: Reinforced belt structure for increased surface rigidity.
- 3 Two-ply tire cord fabric.
- 4 Inner-liner rubber: High air retention for improved tire pressure stability.
- 5 Sidewall protection fabric: Improved sidewall rigidity.

- Large outer tread blocks and high-angle open shoulder grooves provide responsive and stable cornering capability.
- All terrain tread pattern design offers comfortable handling and stability.

KENDA

SUV/ Light Truck

KR-05

SERIES	SIZE	LOAD RANG	S.W. (MM)	O.D. (MM)	MAX. LOAD S/D (LBS)	MAX. LOAD S/D (KGS)	MAX. PSI	RIM (INCH)	TREAD DEPTH (MM)
75 SERIES	LT235/75R15 104/101Q	C	237	736	1985/1820	900/825	50	6.5	11.2
	LT225/75R16 115/112N	E	224	746	2680/2470	1215/1120	80	6.0	11.2
	LT245/75R16 120/116N	E	237	736	3085/2755	1400/1250	80	7.0	11.5
	LT265/75R16 119/116N	D	272	798	3000/2755	1360/1250	65	7.5	12.1
	LT265/75R16 123/120N	E	268	800	3415/3085	1550/1400	80	7.5	12.1
85 SERIES	LT215/85R16 110/107N	D	220	775	2335/2150	1060/975	65	6.0	11.0
	LT235/85R16 126/123Q	G	240	810	3750/3415	1700/1550	110	6.5	12.2
	LT235/85R16 120/116Q	E	240	808	3085/2755	1400/1250	80	6.5	12.2
	30x9.5R15LT 96Q	B (OWL)	240	753	1565	710	35	7.5	11.5
	30x9.5R15LT 104Q	C (OWL)	240	753	1985	900	50	7.5	11.5
	31x10.5R15 LT 109Q	C (OWL)	272	775	2270	1030	50	8.5	12.1

PS:OWL MEANS OUTLINED WITHE LETTER



KR-05

KENDRA



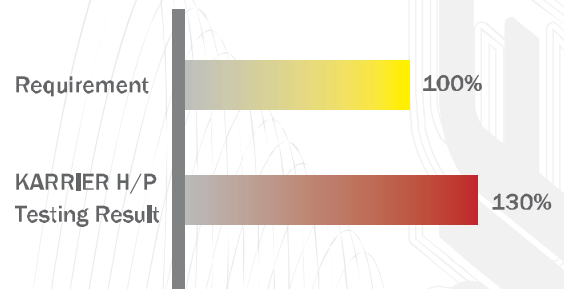
*We provide the automotive industry and millions of drivers worldwide
with a product that defines superior engineering*

superior
engineering

KARRIER
H/P

KARRIER
KR-18 H/P
TRAILER

FMVSS 571-119 Tire Strength (Plunger Test)



- Tread straight pattern design offers excellent safety, comfort and stability.
- The structural design provides superior load capacity and long mileage.

KENDA



Trailer

KR-18

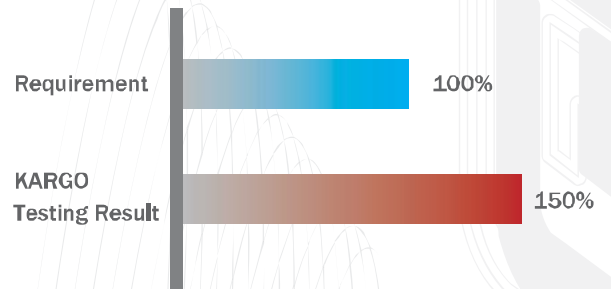
SERIES	SIZE	LOAD RANG		S.W. (MM)	O.D. (MM)	MAX. LOAD S/D (LBS)	MAX. LOAD S/D (KGS)	MAX. PSI	RIM (INCH)	TREAD DEPTH (MM)
	ST235/85R16	E	120/1160	238	803	3085/2755	1400/1250	90	6.5	7.3
	ST235/85R16	G	126/1230	238	803	3750/3415	1700/1550	110	6.5	7.3

KR-18

KARGO

KARGO
KR-16
TRAILER

ECE-R54 Endurance Testing Mileage



- The cross-cut siping improves wet handling, steering and tracking stability.
- Reinforced tread on the inside shoulder provides long and even wear.
- Two steel belts offers rugged puncture resistance and durability.

KENDA



Trailer

KR-03

SERIES	SIZE	PR	S.W. (MM)	O.D. (MM)	MAX. LOAD (LBS)	MAX. LOAD (KGS)	MAX. PSI	RIM (INCH)	TREAD DEPTH (MM)	
75 SERIES	ST205/75R14	4P	208	668	1430	650	35	5.5	8.1	
	ST205/75R14	6P	208	668	1760	800	50	5.5	8.1	
	ST205/75R14	8P	208	668	2040	925	65	5.5	8.1	
	ST215/75R14	4P	216	680	1520	690	35	6.0	8.1	
	ST215/75R14	6P	216	680	1870	850	50	6.0	8.1	
	ST205/75R15	4P	208	693	1480	675	35	5.5	8.1	
	ST205/75R15	6P	208	693	1820	825	50	5.5	8.1	
	ST205/75R15	8P	208	693	2150	975	65	5.5	8.1	
	ST225/75R15	4P	225	720	1760	800	35	6.0	7.7	
	ST225/75R15	6P	225	720	2150	975	50	6.0	7.7	
	ST225/75R15	8P	225	720	2540	1150	65	6.0	7.7	
	80 SERIES	ST175/80R13	4P	179	612	1100	500	35	5.0	8.1
		ST175/80R13	6P	179	612	1360	615	50	5.0	8.1
		ST175/80R13	8P	179	612	1610	730	65	5.0	8.1
ST235/80R16		8P	238	784	3000	1360	65	6.5	8.3	
ST235/80R16		10P	238	784	3500	1597	90	6.5	8.3	

KR-03



- All patterns are connected with arch, the design reduces concentrated stress and increases tear resistance of pattern
- Bigger block pattern improves wear resistance
- New shoulder design and artistic sidewall improves heat dispersion on shoulder and creates an attractive appearance
- The design of reinforced casing and bead increases the loading capacity
- Unique tread compound design improves wear resistance

K363

SIZE	PLY RATING	S.W. (MM)	O.D. (MM)	MAX LOAD CAPACITY AT 60MPH/100KM/H S/D (LBS)	MAX. PSI	RIM (INCH)
6.00-14LT	8PR TT	167	670	1650 / 1562	60	4.5
6.50-14LT	8PR TT	180	702	1848 / 1749	60	4.5
6.50-14LT	10PR TT	180	702	2094 / 1988	75	4.5
6.50-16LT	10PR TT	180	750	2227 / 2117	75	5.5
7.00-15LT	10PR TT	194	744	2381 / 2271	70	5.5
7.00-16LT	8PR TT	198	775	2260 / 2160	82	5.5
7.00-16LT	10PR TT	198	775	2492 / 2370	70	5.5
7.00-16LT	12PR TT	198	775	2712 / 2579	90	5.5
7.50-16LT	10PR TT	210	802	2926 / 2783	75	6.0

- Long, even tread wear
- Improved handling and stability in steer, drive, trailer applications
- Design with four grooves
- Premium off-highway tire for logging cement and construction operations

K370

SIZE	PLY RATING	S.W. (MM)	O.D. (MM)	MAX LOAD CAPACITY AT 60MPH/100KM/H S/D (LBS)	MAX. PSI	RIM (INCH)
7-14.5LT	8PR TL	185	668	1870	70	6.0
7-14.5LT	10PR TL	185	668	2090	85	6.0
7-14.5LT	12PR TL	185	668	2335	100	6.0



- Aggressive tread design provides great grips and controls
- Four-straight grooves enhance driving stability

K391M

SIZE	PLY RATING	S.W. (MM)	O.D. (MM)	MAX LOAD CAPACITY AT 60MPH/100KM/H S/D (LBS)	MAX. PSI	RIM (INCH)
4.50-12LT	6PR TT	127	542	783 / 750	44	3.0
4.50-12LT	8PR TT	127	542	915 / 871	58	3.0
5.00-12LT	8PR TT	141	566	1069 / 1025	58	3.5
5.00-12LT	10PR TT	141	566	1246 / 1190	75	3.5
7.00-15LT	6PR TL	198	748	1852 / 1764	46	5.5
7.00-15LT	8PR TL	198	748	2156 / 2057	60	5.5
7.00-15LT	10PR TL	198	748	2376 / 2266	70	5.5
7.00-16LT	8PR TL	213	803	2255 / 2156	60	6.0
7.00-16LT	10PR TT	213	803	2491 / 2370	75	6.0
7.00-16LT	12PR TT	213	803	2712 / 2579	80	6.0
7.50-16LT	8PR TL	213	808	2590 / 2469	60	6.0
7.50-16LT	10PR TL	213	808	2926 / 2783	75	6.0
7.50-16LT	12PR TL	213	808	3168 / 3014	85	6.0
8-14.5LT	10PR TL	202	706	2545 / 2245	85	6.0
8-14.5LT	12PR TL	202	706	2796 / 2465	100	6.0
8-14.5LT	14PR TL	202	706	3070 / 2710	116	6.0

KENDA BIAS LIGHT TRUCK TRUCK BUS

- Better fuel economy, easier maintenance
- High-strength belt construction for additional toughness

K392

SIZE	PLY RATING	S.W. (MM)	O.D. (MM)	MAX LOAD CAPACITY AT 60MPH/100KM/H S/D (LBS)	MAX. PSI	RIM (INCH)
6.00-14LT	6PR TT,TL	168	674	1408 / 1342	46	4.5
6.00-14LT	8PR TT,TL	168	674	1650 / 1562	60	4.5
6.50-14LT	6PR TT	180	696	1573 / 1496	46	5.0
6.50-14LT	8PR TT,TL	180	696	1848 / 1749	60	5.0
6.50-14LT	10PR TT	180	696	2094 / 1988	75	5.0
7.50-16LT	8PR TT	208	802	2590 / 2469	60	6.0
7.50-16LT	10PR TT	208	802	2926 / 2783	75	6.0





- Special sidewall design and heavy duty construction
- High strength, flex/fatigue-resistant ply improves casing life
- Five-rib tread pattern promotes element stability and low rolling resistance
- Four grooves disperse water better
- Recommended for front tire use

K393

SIZE	PLY RATING	S.W. (MM)	O.D. (MM)	MAX LOAD CAPACITY AT 60MPH/100KM/H S/D (LBS)	MAX. PSI	RIM (INCH)
6.50-14LT	6PR TT	180	700	1573 / 1496	46	5.0
6.50-14LT	8PR TT	180	696	1848 / 1749	60	5.0
6.50-16LT	8PR TT	180	754	2028 / 1918	60	5.5
6.50-16LT	10PR TT	180	754	2227 / 2117	70	4.5
6.50-16LT	12PR TT	180	754	2403 / 2271	80	4.5
7.00-16LT	8PR TT	201	769	2255 / 2156	60	5.5
7.00-16LT	10PR TT	201	769	2492 / 2370	70	5.5
7.00-16LT	12PR TT	201	769	2712 / 2579	80	5.5

- Casing design provides superior comfort
- High-strength carcass construction for additional toughness
- Better fuel economy, easier maintenance
- Recommended for rear tire use

K394



SIZE	PLY RATING	S.W. (MM)	O.D. (MM)	MAX LOAD CAPACITY AT 60MPH/100KM/H S/D (LBS)	MAX. PSI	RIM (INCH)
7.50-16LT	8PR TT	212	798	2590/2469	60	6.0
7.50-16LT	10PR TT	180	802	2932/2789	75	6.0

- Alternating shoulder lug scallops increase lateral grip and stability
- Wide, open-shoulder design provides exceptional self-cleaning capability
- Ultra-high ply turn-up enhances stable responsive handling and increases sidewall durability

K396



SIZE	PLY RATING	S.W. (MM)	O.D. (MM)	MAX LOAD CAPACITY AT 60MPH/100KM/H S/D (LBS)	MAX. PSI	RIM (INCH)
7.50-16LT	8PR TT	210	805	2590/2469	60	6.0
7.50-16LT	10PR TT	212	805	2932/2789	75	6.0

- Five-rib treads design with four grooves for outstanding traction and handling
- Four wide circumferential grooves pump water away
- Casing compound and latest bead design extends casing life

K630 / TRUCK BUS



SIZE	PLY RATING	S.W. (MM)	O.D. (MM)	MAX LOAD CAPACITY AT 60MPH/100KM/H S/D (LBS)	MAX. PSI S/D (LBS)	RIM (INCH)
6.50-16LT	10PR TT	187	750	2160/1900	75	5.5
6.50-16LT	12PR TT	187	750	2400/2115	90	5.5
7.00-15LT	10PR TT	197	750	2320/2040	75	5.5
7.00-15LT	12PR TT	197	750	2580/2280	90	5.5
7.00-16LT	12PR TT	197	775	2700/2370	90	5.5
7.50-16LT	14PR TT	212	806	3330/3175	102	6.0
8.25-16LT	14PR TT	235	855	3759/3307	90	6.0
9.00-20	16PR TT	255	1023	6217/5423	128/117	7.0
10.00-20	16PR TT	276	1058	6614/5798	117/107	7.5
11.00-20	16PR TT	290	1090	7209/6327	117/107	8.0

- Computer designed mold shape uses natural shapes to improve tread wear and durability
- Deep circumferential grooves disperse water away from contact patch for confident control
- Special tread compound provides confident stability and long tread wear

K631 / TRUCK BUS



SIZE	PLY RATING	S.W. (MM)	O.D. (MM)	MAX LOAD CAPACITY AT 60MPH/100KM/H S/D (LBS)	MAX. PSI S/D (LBS)	RIM (INCH)
6.50-16LT	10PR TT	187	750	2160/1900	75	5.5
6.50-16LT	12PR TT	187	750	2400/2115	90	5.5
7.00-15LT	10PR TT	197	750	2320/2040	75	5.5
7.00-15LT	12PR TT	197	750	2580/2280	90	5.5
7.00-16LT	12PR TT	197	775	2700/2370	90	5.5
7.50-16LT	14PR TT	212	806	3330/3175	102	6.0
8.25-16LT	14PR TT	235	855	3759/3307	90	6.0
9.00-20	16PR TT	260	1030	6217/5423	128/117	7.0
10.00-20	16PR TT	276	1058	6614/5798	117/107	7.5
11.00-20	16PR TT	290	1090	7209/6327	117/107	8.0

Truck Bus



KENDA

KENDA RUBBER IND. CO., LTD.

**146, Sec. 1, Chung Shan Road, Yuanlin, 51064
Taiwan**

Tel : 886-4-8345171 Fax : 886-4-8331865

www.kenda.com.tw

